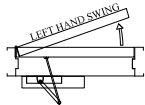
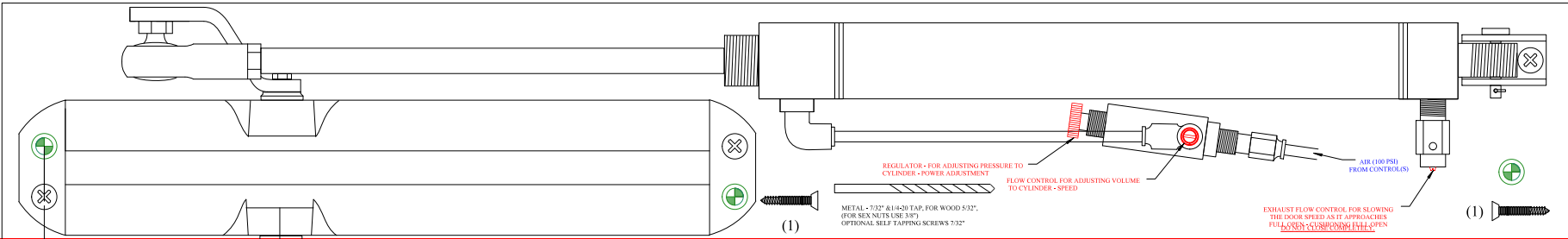


LEFT HAND / TOP JAMB INSTALL



INSTALL ARM 45 DEGREES TO DOOR WHEN CLOSED ADJUST PIVOT ARM WITH SLIGHT PRE-LOAD CLOSED (1)

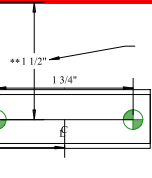
METAL - 7/32" & 1/4-20 TAP, FOR WOOD 5/32", (FOR SEX NUTS USE 3/8") OPTIONAL SELF TAPPING SCREWS 7/32"



ALIGN LINE WITH BOTTOM OF FRAME FACE OR LOWER TO CLEAR DOOR STOP (STEEL FRAMES) DURING ACTUATOR ARM MOVEMENT

3 1/2"

8"



** NOTE: IF THE OPERATOR IS LOWERED TO MAINTAIN OPERATOR ARM CLEARANCE, 1 1/2" MUST ALSO REMAIN FROM OPERATOR TO SHOE MOUNT SCREW CENTERS.

(2)

METAL - 7/32" & 1/4-20 TAP, FOR WOOD 5/32", (FOR SEX NUTS USE 3/8") OPTIONAL SELF TAPPING SCREWS 7/32"

ALIGN LINE WITH CENTERLINE OF HINGE (ON OPPOSITE SIDE OF JAMB)

NOTE: DRILL HOLES IN MOUNTING PLATE FOR ADDITIONAL FASTENERS IF NEEDED

Gentleman Door Automation LLC		
Last Update	Description	Owner
1AUG12	CommLHand	GDA