

# NexGen CapTouch Series

Capacitive Touch Door Activator Switches

## INSTALLATION INSTRUCTIONS

### General Description

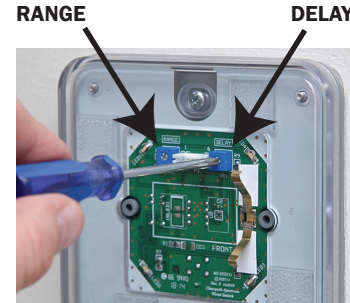
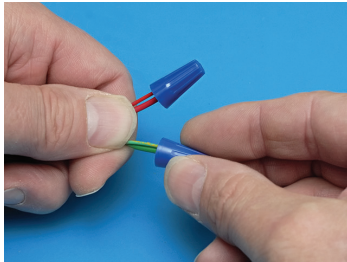
The NexGen CapTouch series switches are capacitive touch devices designed to activate full and low energy automatic doors. Their low profile design makes them ideal for ADA applications. Other applications include request-to-exit devices (1 amp contact) and point-of-purchase displays. The NexGen CapTouch is microprocessor controlled, allowing for superior operation in a smaller unit.

Contents: (1) NexGen CT Switch, (1) Hardware Pack, and (1) Installation Manual.

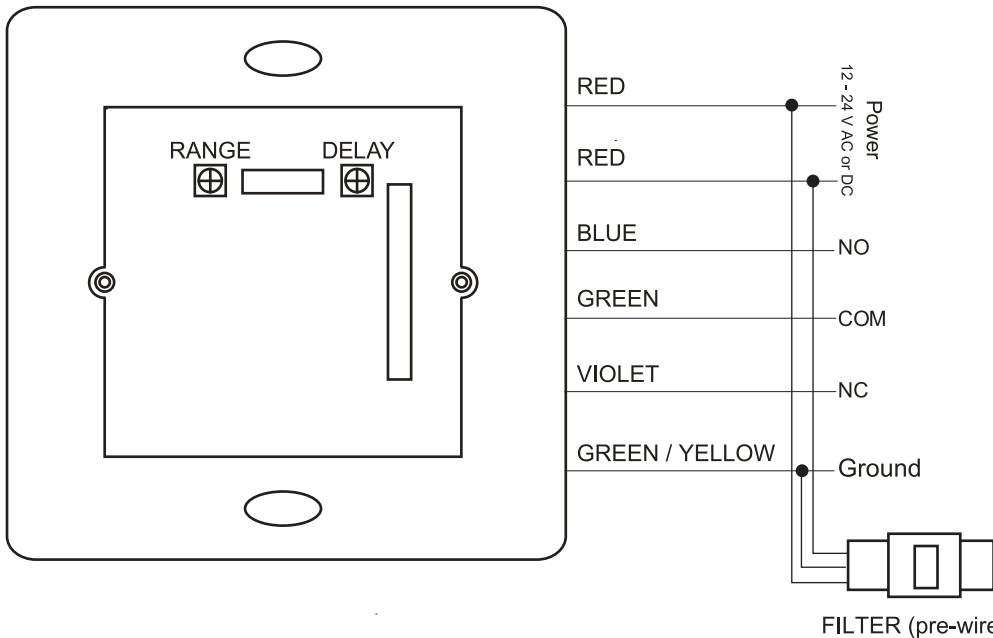


### Basic Installation

1. Remove faceplate using a screwdriver as shown.
2. SEE WIRING DIAGRAM BELOW  
Make all wiring connections using the wire nuts provided in the hardware package.
3. Install switch to standard single or two gang box using screws supplied in hardware pack.
4. Adjust range and delay before activation by turning potentiometer using Philips screwdriver.
5. Replace faceplate and test unit to ensure proper operation.



### WIRING DIAGRAM



Typical wiring: Red wires connect to 12 - 24 V AC or DC. Blue wire connects to Activate on Door Control. Green wire connects to Common on Door Control. Green/Yellow wire connects to Earth Ground. Violet wire does not get connected. Range adjustment from touch (0") to 1". CCW is minimum. Turn CW to increase. Delay before activation adjustable from 0.05 to 3 seconds. Turn CW to increase.

**NOTE:** To use the NexGen as a replacement for existing two wire switch applications, order our 2W-Module.

For further technical assistance, contact the factory at 1-317-842-2545.

