

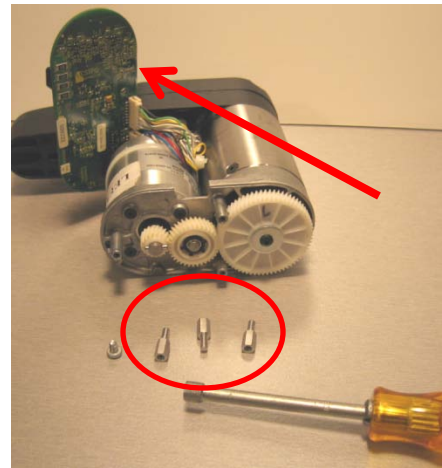
How to Change the Hand of an ADA EZ Door Opener



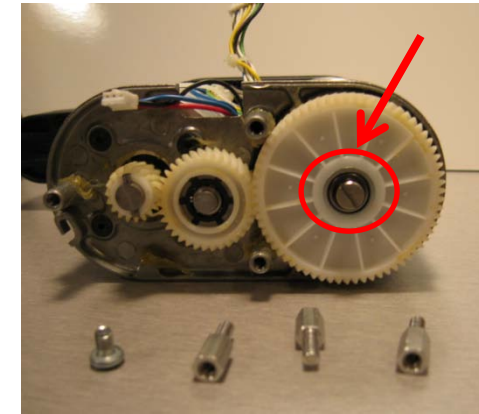
Remove two bottom cover screws using 9/64" hex driver. Remove cover, battery and opener dress cover.



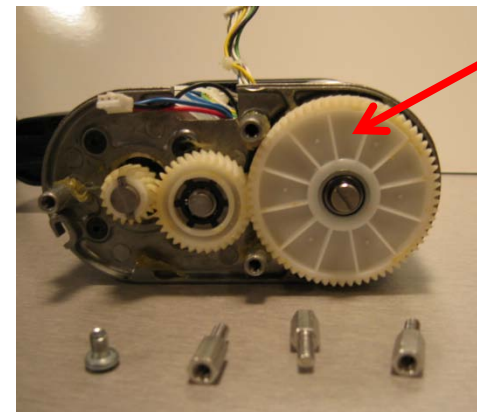
Remove one phillips screw. Gently remove outer circuit board. Use caution as to not bend connector pins.



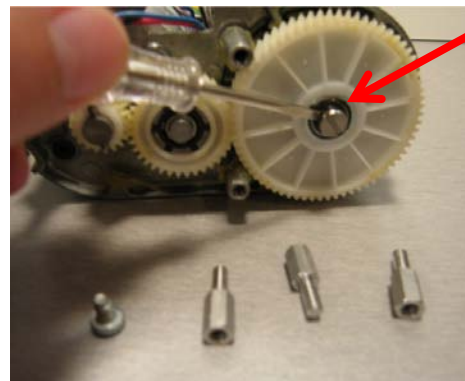
Remove three standoffs using 1/4" nut driver. Gently move inner circuit board out of the way.



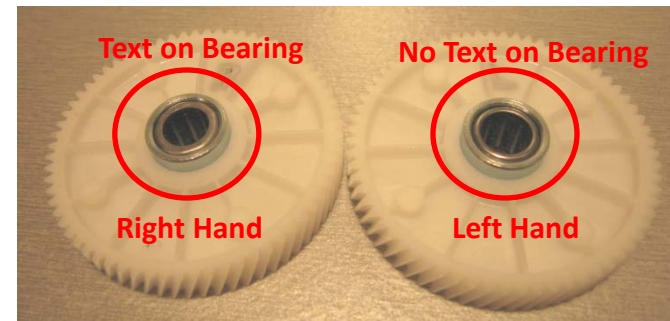
Only ADA EZ units with this slotted retainer shaft can be re-handed. Hex screw head versions can not be re-handed.



Make a mark on large gear with a pen or screwdriver tip before you remove the gear. Once the gear is removed it will be difficult to determine which hand is which.



Using a small flat head screw driver Or needle nose pliers carefully remove retainer ring that is captured in the slot behind the shaft head. Wear safety glasses!



Gears will be labeled "R" or "L"
Flip the gear over so that the mark you made is concealed. Reverse the steps to reassemble the operator.

