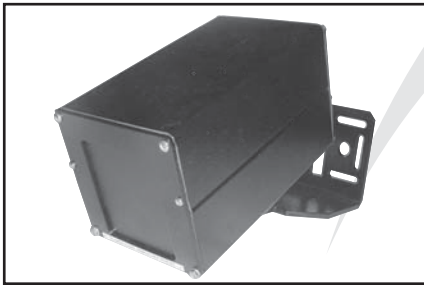


## ID20 Long Range Industrial Door Microwave Motion Detector

SENSORS & SWITCHES



### Product Name

ID20 Long Range Industrial Door Microwave Motion Detector

### Manufacturer

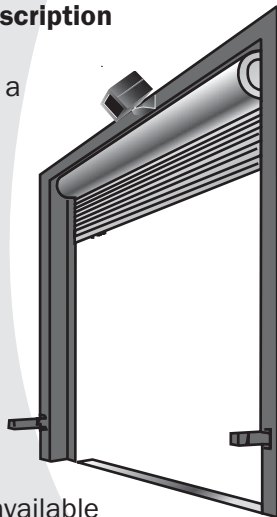
MS SEDCO  
8701 Castle Park Drive  
Indianapolis, IN 46256  
Phone: (800) 842-2545  
(317) 842-2545  
Fax: (800) 849-3387  
(317) 849-3387

Email: [custsvc@mssedco.com](mailto:custsvc@mssedco.com)  
[www.mssedco.com](http://www.mssedco.com)

### Product Description

#### BASIC USE

The ID20 is a microwave motion detector designed to activate an automatic industrial door. The main advantage of the ID20 over other available motion sensors is that it responds to traffic in only one direction. When used in doorways with two-way traffic, the ID20 allows the door to close sooner by sensing only approaching traffic,



providing more efficient and economical door operation. The ID20 generates a very low power microwave beam aimed to cover the same area normally covered by one or more loop detectors. It is less expensive to install and less susceptible to damage and malfunction from ice, salt and heavy vehicular traffic.

The ID20 has an approximate maximum pattern size of 18.5 feet wide by 60 feet deep. The pattern is adjustable by turning the range potentiometer mounted on the PC board and aiming the unit.

The ID20 operates on much the same principle as police radar. The unit transmits a low power microwave signal, some of which is reflected back by a moving target such as a forklift or truck. The larger the vehicle, the greater the energy reflected, and the greater the potential detection range. Microwave signals have the added advantage of being unaffected by air motion, temperature and humidity changes, or high frequency sounds.

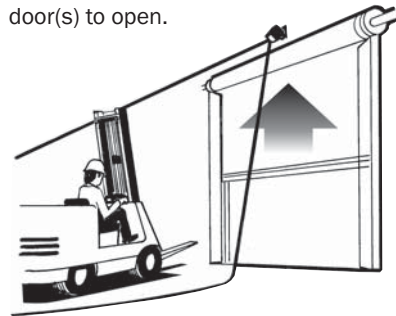
### Technical Data

- Hands-free door control
- Replaces loops either temporarily or permanently
- Heavy-duty, weather-proof enclosure
- Easy to set-up and install
- Long range (up to 60 feet)
- Outdoor and/or indoor use
- Responds to motion in only one

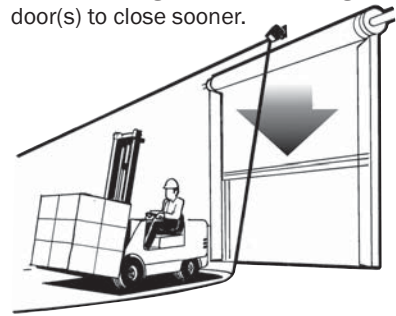
direction—approach only or depart only

- Use Safety Beams or Safety Sensors Where Appropriate
- Hold-open time delay (0.5 to 5 seconds)

Approaching traffic enters the detection zone. The ID20 signals the door(s) to open.



Departing traffic clears the hold open beam. The ID20 ignores departing traffic entering its zone, allowing the door(s) to close sooner.



## ID20 Long Range Industrial Door Microwave Motion Detector

SENSORS &amp; SWITCHES

### SPECIFICATIONS

Model	ID20
Operating Frequency	10.525 GHz
Detection Method	Doppler Shift Microwave
Detection Pattern	Adjustable
Detection Angle	Adjustable
Directionality	Switch Selectable—Approach Only or Depart Only
Response Time	0.25 seconds
Hold Time	0.5 to 5 seconds, adjustable
Power	12V to 24V AC or DC
Current Consumption	0.25 amps
Relay Contacts	Form C, rated at 3 amps
Mounting	Heavy-duty metal bracket with lockset
Enclosure/Finish	Black powder coated aluminum
Temperature	-35 °F to 165 °F (-37 °C to 74 °C)
Physical Dimensions	4"H x 4"W x 7"D
Weight	4 lbs.

### APPROVALS

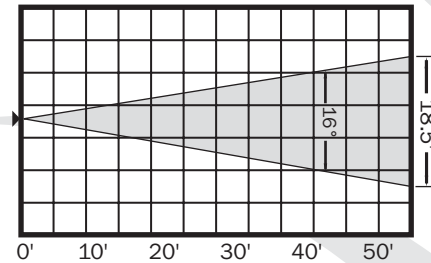
FCC

### Installation

#### SETUP AND ADJUSTMENT

The ID20 Industrial Door Activator's pattern is adjustable by turning the range potentiometer mounted on the PC board and aiming the unit.

### COVERAGE PATTERN



Detection pattern is approximately 18.5 feet wide by 60 feet deep.

(This detection pattern is approximate and will vary slightly. Walk-test the unit to assure the pattern desired.)

### Availability & Cost

#### AVAILABILITY

Available internationally from manufacturer's authorized distributors; contact MS SEDCO for the location of nearest distributor.

#### COST

Cost information on MS SEDCO products is available from the manufacturer's authorized distributors.

### Warranty

A one year warranty is available from the manufacturer covering defects in materials and workmanship. Contact MS SEDCO for details.

### Maintenance

MS SEDCO recommends that all maintenance and adjustments be performed by a Certified Technician.

### Technical Services

MS SEDCO's staff of factory trained sales and service personnel offer design assistance and technical support. Local distributors are also available to assist in selecting appropriate devices for specific uses and to provide onsite installation.

### Filing Systems

- Additional product information is available from the manufacturer upon request.

### DIMENSIONS

